

Ontash

Table of contents

1 HOME.....	3
1.1	3
2 COMPANY.....	3
2.1 Ontash - Overview.....	3
2.1.1 Company Overview.....	3
2.2 Ontash - Contact Information.....	4
2.2.1 Phone, Fax, E-Mail.....	4
2.2.2 Mailing Address.....	4
2.3 Ontash - Directions.....	5
2.3.1 Directions.....	5
2.3.1.1 From New York City by Car.....	5
2.3.1.2 From New York City by Bus.....	5
2.3.1.3 From the New Jersey Turnpike.....	5
2.3.1.4 From other locations.....	5
2.3.1.5 Finding our Office.....	6
2.4 Ontash - News.....	6
2.4.1 9-27-2008 Ontash India releases Malayalam Language Pack for DotnetNuke.....	6
2.4.2 2-13-2007 Ontash India Formed.....	7
2.4.3 8-16-2005 ShipNet - Preliminary Product Information released.....	7
2.4.4 9-28-2005 Ontash.net - Site Re-launched.....	7
2.5 Ontash India.....	7
2.5.1 Company Overview.....	7
2.5.2 Further Information.....	7
2.5.3 Address.....	8

3 PRODUCTS.....	8
3.1 Ontash - Product Guide.....	8
3.1.1 Product Guide.....	8
3.2 ShipNet - Product Description.....	8
3.2.1 Introduction.....	8
3.2.2 Online Demonstration.....	8
3.2.3 Highlights.....	9
3.2.4 Features.....	9
3.2.5 Specifications.....	10
3.2.6 Return on Investment.....	10
3.2.7 Installation Requirments.....	10
3.2.8 Pricing.....	10
3.2.9 Support.....	11
3.2.10 Availability.....	11
3.2.11 Further Information.....	11
4 SUPPORT.....	11
4.1 Ontash - Support.....	11
4.1.1 Support.....	11
4.2 Ontash - Malayalam Language Pack.....	11
4.2.1 Overview	11
4.2.2 Screenshot.....	11
4.2.3 Download	12
4.2.4 Licensing.....	12
4.2.5 Further Information.....	12
5 All.....	12

1. HOME

1.1.



2. COMPANY

2.1. Ontash - Overview

2.1.1. Company Overview

Ontash develops software products and services for the Logistics and Healthcare industries. The company's strengths are in developing web server based applications using the latest

software engineering methodologies. The company was started in 1992 to provide IT consulting services. In 2002 company adopted a new business strategy to concentrate on building ground breaking software products and services. This strategy is based on a systematic evaluation of opportunities for software products and services and a product development strategy based on the latest software engineering methods.

In December 2006, the company released its first commercial product - ShipNet - a Contract & Quotation management system for freight forwarders and NVOCC's (Non-Vessel Operating Common Carriers). For an online demonstration of ShipNet click [here](#) (Requires Flash Player).

In early 2007, Ontash formed a subsidiary company called [Ontash India](#) in Kozhikode (Calicut), India. Ontash India will be a software development center and will allow Ontash to leverage the relatively abundant and lower cost engineering talent available in India. The company will be formally known as Ontash India Technologies Private Limited and will begin operations in March of 2007.

The company is also a founding member of [Mindmakers.org](#), a forum dedicated to the development of plug-and-play Artificial Intelligence Systems.

The company is based in Guttenberg, New Jersey adjacent to New York City. Ontash is a privately owned Corporation incorporated in New Jersey.

2.2. Ontash - Contact Information

2.2.1. Phone, Fax, E-Mail

Our phone, fax and e-mail addresses are:

Phone: +1-(201)-295-0152
Fax: +1-(201)-295-0642
E-Mail: info@ontash.net

2.2.2. Mailing Address

Please send all regular mail (US Post, UPS, Fedex etc.) to following address:

Ontash Inc.
7002 Boulevard East, Suite 29B
Guttenberg, NJ 07093
USA

2.3. Ontash - Directions

2.3.1. Directions

Our office is located in Guttenberg, New Jersey which is in the Greater New York City Metropolitan Area. It is conveniently accessible from New York City and Newark and La Guardia Airports. Directions to our office are:

2.3.1.1. From New York City by Car

- Take the Lincoln Tunnel
- Take the second exit which is for Weehawken.
- You are now on John F Kennedy Boulevard E
- In aprox 7-10 mins you will see a complex of three cylindrical towers on the right. The cross street is 69th. The name of the complex is the Galaxy.
- Park on the street or in the garage within the complex. We are in the lower level of the Mall

2.3.1.2. From New York City by Bus

- Go to Port Authority on 42nd St between 9th & 10th Ave
- Outside port authority on 42nd Street there is a private bus stop. All buses there go to Boulevard East in New Jersey.
- Take any bus and ask the driver to let you off at the 'Galaxy'.
- We are in the lower level of the Mall.

2.3.1.3. From the New Jersey Turnpike

- From the NJ Turnpike (I95), take exit 16 for the Lincoln Tunnel.
- Get off at last exit before the tunnel which is for Weehawken & Hoboken.
- Go thru the first light.
- Make a left at next lite, which is a T Junction.
- You are now going north on Blvd East.
- In aprox 7-10 mins you will see a complex of three cylindrical towers on the right. The cross street is 69th.
- The name of the complex is the 'Galaxy'.
- Park on the street or in the garage within the complex.
- We are in the lower level of the Mall.

2.3.1.4. From other locations

See [Mapquest](#)

2.3.1.5. Finding our Office

We are physically located in the lower level of the Galaxy Mall at 7000 Boulevard East, in Guttenberg, New Jersey. The address is:

Ontash Inc.
7000 Boulevard East, L-23
Guttenberg, NJ 07093
USA
Tel: +1-(201)-295-0152

Note:

Please send Mail to our [mailing address](#) and not this office address.

2.4. Ontash - News

2.4.1. 9-27-2008 Ontash India releases Malayalam Language Pack for DotnetNuke

Ontash India Technologies Pvt Ltd (Ontash India) releases Malayalam Language Pack for Dot Net Nuke (DNN) the premier open source content management system. The use of the Malayalam language pack with DNN facilitates the construction of complex web sites in Malayalam without extensive knowledge of web technologies. E-commerce web sites and websites with multiple languages can be developed quickly.

Ontash India is a privately held Software development company based in Kozhikode. Its parent company Ontash Inc. is based in New Jersey, USA. Ontash India supports the operations of its parent company and also provides software development services to the Indian and Middle East markets. Ontash has Sun and Microsoft certified programmers and currently working towards obtaining ISO 9001 certification. Ontash commenced operation in May 2007 and plans to scale to around 100-150 users over the next 5 years. Ontash India is an active member of the Calicut IT forum and the Malabar Chamber of Commerce.

For further information please contact Mr. Charles Thomas (charles@ontash.net)

Related Links:

[Malayalam Language Pack](#)

[DotnetNuke](#)

[Article in Hindu Online of August 30, 2008](#)

2.4.2. 2-13-2007 Ontash India Formed

Ontash of Guttenberg, New Jersey announced the formation of Ontash India, a subsidiary company based in Kozhikode (Calicut), India. Ontash India will be a software development center and will allow Ontash to leverage the relatively abundant and lower cost engineering talent available in India. The company will be formally known as Ontash India Technologies Private Limited and will start operations in March of 2007. More...

2.4.3. 8-16-2005 ShipNet - Preliminary Product Information released

Ontash of Guttenberg, New Jersey has released preliminary product information for ShipNet which is a first of its kind software targeted towards medium and large size Freight Forwarding companies, NVOCC's and 3PLS's. The software automates the management of carrier contracts and quotations. It allows salespersons in freight forwarding companies to view shipping rates and add-on charges over a secure web site and to generate customer quotations with a few mouse clicks. The product has a clear return on investment (ROI) as it reduces the time taken for generating a quotation from several hours to less than a few minutes. More...

2.4.4. 9-28-2005 Ontash.net - Site Re-launched

Ontash of Guttenberg, New Jersey has re-launched its company website ontash.net . The site provides information about the company's history and its products and services. Ontash provides software products and services for the Healthcare and Logistics Industries.

2.5. Ontash India

2.5.1. Company Overview

In early 2007, Ontash formed a subsidiary company called Ontash India in Kozhikode, India. Ontash India will be a software development center and will allow Ontash to leverage the relatively abundant and lower cost engineering talent available in India. The company will be formally known as Ontash India Technologies Private Limited and will begin operations in March of 2007.

[Kozhikode](#) (also known as Calicut) is in the Southern Indian state of Kerala on the West Coast of India. The city is serviced by an International Airport and is the home of several major Universities.

2.5.2. Further Information

For further information on Ontash India, including job openings please contact Mr. Charles Thomas at:

Phone (US): +1-201-295-0152 Ext. 215
 Cell (India): +91-94 9525 7523
 Phone (India): +91-495 2325399
 Email: charles@ontash.net

2.5.3. Address

The company is located at the following address:

Ontash India Technologies Pvt Ltd.
 2nd Floor, Kalliyath Building
 Panniyankara
 Kallai Road
 Calicut 673003
 Kerala
 India
 Tel/Fax: +91 495 2325399

3. PRODUCTS

3.1. Ontash - Product Guide

3.1.1. Product Guide

Product	Industry	Description	Availability
	Logistics	Contract & Quotation Management System for Freight Forwarders, NVOCC's and 3PL's.	Now

3.2. ShipNet - Product Description

3.2.1. Introduction

This is a product information sheet for ShipNet - Contract & Quotation Management Software for Third Party Logistics Providers and Freight Forwarders.

3.2.2. Online Demonstration

VIEW SHIPNET DEMO

For an online demonstration of ShipNet go to http://www.ontash.net/shipnetdemo/shipnetdemo_take1.html (Requires Flash Player).

3.2.3. Highlights

Ontash of Guttenberg, NJ has released preliminary product information for ShipNet which is a first of its kind software targeted towards medium and large size Freight Forwarding companies, NVOCC's and 3PLS's. The software automates the management of carrier contracts and quotations. It allows salespersons in freight forwarding companies to view shipping rates and add-on charges over a secure web site and to generate customer quotations with a few mouse clicks. The product has a clear return on investment (ROI) as it reduces the time taken for generating a quotation from several hours to less than a few minutes.

Pricing is on a per-seat (user) basis. The price per seat ranges from USD 750/seat to USD 1500/seat depending on the volume of seats purchased. The product will be generally available in the 3rd Quarter of 2006.

3.2.4. Features

Carrier Contract Editor: Carrier contracts (also called rate sheets) can be edited, stored and viewed on the system. The contract editor supports carrier defined commodity groups, bullet rates, arbitrary add-on charges (like Peak Season Surcharge, Origin Charge, Destination Charge etc.) and UN Location Codes for Ports. Contracts can be printed from the system.

Quote Editor/Generator: Quotes can be edited, stored and viewed on the system. The editor supports Customer Defined commodity groups. A quote is generated by specifying routes and customer defined commodity groups. The system will search all applicable carrier contracts and create an initial quote with a default markup. The quote is then edited to create final quote. The quote can then be printed for delivery to the customer.

Integration with Existing Systems: Data can be exported to Accounting/Admin and Operations Systems. Contracts and accepted quotes can be exported to a database independent XML format.

Access Controls: Access to the system is restricted based on the role of the user. By default salespersons can only view contracts and create quotes. Data Entry clerks can input new contracts. Sales managers can view quotes created by their subordinates but not those created by others.

Secure/Encrypted Web Access: The entire product interface can be accessed from a

standard web browser over an encrypted SSL (Secure Socket Layer) link. This means that the software can be accessed over the internet or corporate LAN and that data transmission is encrypted for maximum protection of proprietary information. Each user is assigned an id and password for access.

Customer Information: Customer information such as company name, contact name, address etc can be tracked by the system.

3.2.5. Specifications

- Users: up to 1000 active users.
- Contracts: up to 1000.
- Quotes: up to 1000000
- OS: Red Hat Linux 9.0
- Database: Internal MySql SQL Database
- UI Technology: Tomcat Servlet Container
- Printing: Systems objects are printed in Adobe PDF format

3.2.6. Return on Investment

The cost of purchasing and installing this software can be recovered in less than a year. This estimate can be arrived at by looking at the tangible cost savings of using the system which is that quotes can be generated in a few minutes down from several hours. This saves 1.25 days of a salespersons time every month³. This time can be spent more productively on sales efforts. Other savings from using the system include elimination of the need to distribute carrier contracts (rate sheets) to all salespersons, having an electronic record of generated quotes and the ability to monitor quote generation activity and quote profitability across all salespersons.

3.2.7. Installation Requirments

The software runs on a dedicated server running Red-Hat Linux. The minimum recommended configuration is a 3 Gigahertz Pentium III CPU, 2 Gigabyte RAM, 150 Gigabyte Disk, CD Reader, Backup Storage Device. This configuration will support 20-75 users and will cost around USD 2000 - 3000 in addition to the cost of ShipNet software.

3.2.8. Pricing

The software is priced based on the number of users it supports. Any salesperson, manager or data entry person using the software is counted as a user. The price per seat ranges from USD 1500/seat to USD 750/seat depending on the volume of seats purchased.

An unlimited user license is also available. This cost will include installation support and 1 year of technical support and upgrades/patches.

3.2.9. Support

Installation and user support will be provided by e-mail. A bulletin board will also be provided for users to discuss issues and communicate with tech support staff.

3.2.10. Availability

The production version is now available.

3.2.11. Further Information

Please contact us for further information including pricing and to arrange a demonstration.

Phone: +1-201-295-0152 Ext. 111
Email: sales@ontash.net

4. SUPPORT

4.1. Ontash - Support

4.1.1. Support

Product support will be provided via e-mail, bulletin boards and mailing lists. Further information will be provided on this page in early 2007.

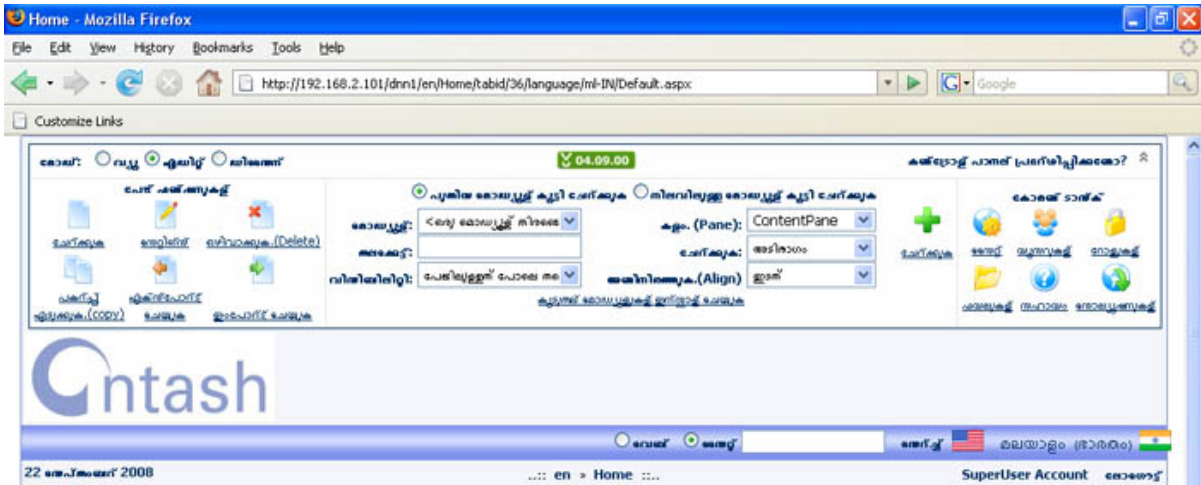
4.2. Ontash - Malayalam Language Pack

4.2.1. Overview

Malayalam Language Pack for DotNetNuke is a drop-in language specific customization pack which enables the popular Content Management System (CMS), DotNetNuke to be used in the Malayalam Language spoken in South India.

DotNetNuke is the premier open source CMS which has over 400,000 users. It is a free, open source, and scalable application used to build complex websites. It is built upon the Microsoft .NET platform.

4.2.2. Screenshot



4.2.3. Download

Malayalam Language Pack [Download Here](#) (The Installation Guide is included)

4.2.4. Licensing

THE SOFTWARE IS PROVIDED "AS IS", WITHOUT WARRANTY OF ANY KIND, EXPRESS OR IMPLIED, INCLUDING BUT NOT LIMITED TO THE WARRANTIES OF MERCHANTABILITY, FITNESS FOR A PARTICULAR PURPOSE AND NONINFRINGEMENT. IN NO EVENT SHALL THE AUTHORS OR COPYRIGHT HOLDERS BE LIABLE FOR ANY CLAIM, DAMAGES OR OTHER LIABILITY, WHETHER IN AN ACTION OF CONTRACT, TORT OR OTHERWISE, ARISING FROM, OUT OF OR IN CONNECTION WITH THE SOFTWARE OR THE USE OR OTHER DEALINGS IN THE SOFTWARE.

4.2.5. Further Information

For further information please contact us at:

Phone: (91) 495 2325399
 Email: support@ontash.net

5. All